



# Lake Leelanau

## LAKE ASSOCIATION

Summer 2010

News & Views from the Watershed

### *LLA Cures for the Summertime Blues !!!!*

#### *Gonna Raise a Holler*

**2010 ANNUAL MEETING:** *Join us!* Meet with Board and other members to discuss the issues affecting our lake and our Association. Come early to socialize with wine & snacks. Featured guest speaker, Leelanau Conservancy Chairman of the Board Tom Dunfee: *Conserving Lake Leelanau.* Mueneke Room. Friday, June 25: 5:30 to 7:00 p.m.

**6<sup>th</sup> Annual Kids' Fishing Day:** Fun for the whole family. Fun for you ... even if you don't fish or have kids! The joy of the kids is infectious (check out the video on our website). Free admission. Bring tackle if you have it: some will be available, if you don't. Free bait will also be provided. Learn to fish if you don't know how. Besides fishing, there's fun activities and free food & drink. Free! Don't miss this event! Veronica Valley Park. **Sunday, June 27: 11 a.m. to 3 p.m.**

**Phragmites Forum:** Learn all about it. Shoreline survey results. Grant application outcome. The threat it poses to our lake and your shore; what to do to combat it. Time and place TBA

**4<sup>th</sup> Annual Legacy Circle Celebration:** Event to thank Legacy Circle members at historic Birchcroft Cottage. Featuring lite-bites, still wine, & sparkling conversation. **Saturday, September 11: 5 to 7 p.m.**

#### *Protect the Lake*

The Watershed Protection Plan (p.4) developed by the Leelanau Conservancy, the LLLA, and others, calls for periodic **aquatic plant surveys** of Lake Leelanau. LLLA volunteers will conduct the first of these surveys this summer. Our Association also continues to be in the forefront of phragmites control efforts.

Lake Association volunteers recently assisted the Leelanau Conservation District in doing **phragmites shoreline surveys** of the south and north lakes (pictured above). Our efforts to monitor the lake and streams feeding it for water quality and invasive species are longstanding. We have developed "Good Practice Guidelines" for riparians and promote good waterfront land practices in this newsletter, on our website, and in other publications.



Check out our *Guide for Riparian Landowners* online, on our website: [www.lakeleelanau.org](http://www.lakeleelanau.org).

Our Fish Committee started and developed **Kids' Fishing Day** (p.7), with other supporters joining; and we have, since, worked with the county to acquire Veronica Valley Park as a permanent site for this event, and for the year-round enjoyment of Leelanau county residents and visitors. The LLLA continues to work with the county to further develop this park by stocking and monitoring the ponds, and improving other facilities. The Fish Committee has long worked with the DNR and others to stock fish and maintain quality fishing on Lake Leelanau.

The LLLA actively **advocates for lake-friendly public policies** in Leelanau County and its townships. Our best known effort in this vein was our success in preventing a proposed 80 slip marina in the Narrows, and our subsequent efforts to significantly reduce the size and negative impacts of the various scaled-down proposals that followed. Our efforts to conserve this property are ongoing. We regularly monitor development & construction permit applications throughout the watershed and intercede as needed. We worked successfully to spread part of the cost of the Leland dam repairs and the Narrows dredging to the county, not just riparian owners. We work to develop anti-key-holing ordinances in all townships.

We support **marine safety efforts** with equipment, such as bouys (p.4), and financial aid. We work to inform riparians about swimmers itch, we have worked to get to the source of itch, and we continue to do so (p.3-4). To keep protecting – and to better protect – our lake, we need you to join us.

#### *Well Worth Your Dollar*

Our dues are near the median of similar Lake Associations. We are a nonprofit organization: our IRS approved 501-c-3 tax status makes all dues and donations tax deductible.

**Kids' Fishing Day 2009 Video**

<http://www.youtube.com/watch?v=UpioHbPXTre&feature=related>

## BOARD OF DIRECTORS

### OFFICERS

**John Fitzpatrick**, President  
 231-271-4047 | jgibfitz@charter.net  
**Bob Miller**, Vice President  
 231-932-7157 | bob.mhrs@charter.net  
**Dave Hunter**, Treasurer  
 231/256-9575 | ddhunter@att.net  
**Colleen Moose**, Secretary  
 231-256-7060 | cmoose1532@aol.com  
**Hugh Farber**, Past President  
 231-256-7187 | hnbfarber@charter.net

### TOWNSHIP REPRESENTATIVES

**John Popa**, Bingham  
 231-947-1088 | jjpopa@charter.net  
*HELP WANTED*, Centerville  
*HELP WANTED*, Elmwood  
**Gil Bogley**, Leland  
 231-256-9654 | gab@lakefamilies.com  
**Wayne Wunderlich**, Leland  
 231-256-9294 | Cedarhavencot@Hotmail.com  
**Gene Wishowski**, Solon  
 231-941-2302 | LKLeelanau@aol.com  
**Joyce Wayt**, Suttons Bay  
 231-256-7261 | jmwayt@localnet.com

### COMMITTEE CHAIRS

**Pete Taylor**, Fish  
 231-590-3309 | imagearts1@aol.com  
**Larry Hauser**, Communication  
 231-271-6091 | lshauser@aol.com  
**Jim Kacin**, Water Safety  
 231-256-8873 | cakacin@charter.net  
*HELP WANTED*, Membership  
**Wayne Swallow**, Water Quality  
 231-941-4698 | wayneswallow@att.net

### Acknowledgement

<http://www.youtube.com/watch?v=MeWC59FJqGc&feature=related>

### Photo Credits

p. 1-4 Larry Hauser | p. 5 Cindy Kacin | p. 6 Sera Thompson | p. 7  
 Larry Hauser | p. 8 Wayne Swallow

### Help Wanted

email: [leelanaukassn@aol.com](mailto:leelanaukassn@aol.com) | phone: 271-6091

*Township representatives* are the Association's eyes and ears, and sometimes voices, in the several townships in the Lake Leelanau watershed. It is important that riparian concerns be considered, and riparian interests be represented, in these townships' deliberations.

The *Membership Chair* serves on the board. The Membership committee oversees recruitment and retention of members & cooperates with the Communications Committee and the Treasurer on mailings & correspondence. No database management required.

## Contents

1. [LLLA Cures for the Summertime Blues !!!!](#)
2. [Board of Directors | Profile of David Hunter](#)
3. [President's Letter | Invasive Plants | Preventing & Treating Swimmers Itch](#)
4. [Overlay District Survey Results | Itch Control Update | Lake Gets New Buoys](#)
5. [17 Best Practices | PWC Safety Rules](#)
6. [Spring Wildlife Extravaganza](#)
7. [Watershed Plan Completed | Walleye Fest Returns | Kids' Fishing Day Ahoy!](#)
8. [Photos from Wayne Swallow](#)

### New Treasurer, David Hunter

David Hunter grew up in Flint, Michigan and received his undergraduate and graduate degrees in Business from the University of Michigan. He and his wife Nancy have summered in Leland for over 25 years and moved here permanently in 2002. David's business career included senior domestic and international executive roles with Clark Equipment Co., Chrysler Corp., Talley Industries and The Auburn Foundry Group where he still serves as a consultant. The Hunters and their two daughters have lived outside the U.S. in Mexico, Belgium, Italy and Germany for a total of over fifteen years. In addition to his business career David has been active on numerous hospital, United Way and other community boards. He currently serves on the board of ShareCare of Leelanau.



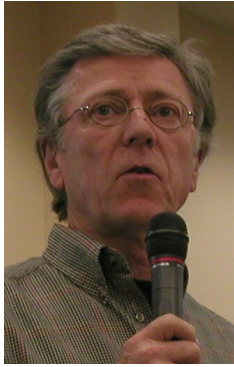
### Recommended Reading

Hugh Farber

The spring issue of "Michigan Riparian" magazine has 2 great articles. One about how good waterfront care leads to maintaining & increasing property values around the lake, and increases attractiveness to visitors; another showing how to do it and the benefits to the owner. **A COPY CAN BE ORDERED FOR \$2.50 FROM THE PUBLISHER (SHOWN BELOW).**

### Subscribe to Michigan Riparian Magazine

*Michigan Riparian* is a quarterly magazine published in February, May, August, & November and devoted to the management and wise use of Michigan's lakes and streams. The cost of an individual subscription is \$10.00. To subscribe, mail your contact information (mailing address & phone) along with a check for \$10 to **The Michigan Riparian | P.O. Box 122 | Long Lake, Michigan 48743**. Or complete & mail the downloadable form from their website: <http://www.mi-riparian.org/>.



## President's Letter June 2010

As I reflect on the end of my two-year tenure as President, many images flood into my mind: attorneys arguing the Narrows development case in the county courthouse, joyful faces of children on Kids' Fishing Day, walls of phragmites along the Cedar River, mergansers and their broods scurrying away from the first hint of human presence. I've learned the science of swimmer's itch, testified before government bodies, debated strategy with lawyers, become informed about invasive species I could hardly pronounce, and built relationships with like-minded local leaders and groups.

Nonetheless, the most powerful impression I will carry with me is the dedication of our Board members and volunteers. I am very proud to have served with them. They care, they work hard, they don't hesitate when help is needed. One problem...there aren't enough of them and many have been at it a long time. We need more "helpers", from shoreline surveys to stuffing envelopes. If you want to help, check your area of interest on the dues envelope and send it in. We'll get you involved.

Speaking of the dues envelope...don't send it in empty! Write a check and send it today. To my dismay, we have created more benefits for our members (and non-members too) and have entered a time when doing more often means spending more, but our membership has actually declined. Programs like swimmer's itch mitigation are costly and benefit *everyone*, so we need *everyone* to join the association and support our efforts. Whether at the basic \$45 level or one of the more generous Legacy memberships, your financial support is critical to our ability to protect the lake we all love.

It would be most gratifying if the last major event of my tenure would be a surge in membership. How about it?

**John Fitzpatrick, President**

## Invasive Plants by Wayne Swallow

Invasive plants pose a significant risk to the ecosystem of Lake Leelanau. Past newsletters have pictures of *Phragmites australis* infestations on south lake and in the Narrows. The Leelanau Conservation District in conjunction with LLLA and the Leelanau Conservancy has applied for a grant to fund eradication of these plots this year. The announcement of grant winners is now slated for early July. We are awaiting word on the grant. If you doubt the capability of this species to force native species out and overrun the ecosystem, just visit the Saginaw Bay area. The species has all but eliminated views of Lake Huron with its dense 15 foot tall grass stems. Phragmites is just one invasive plant species that can cause havoc to native ecosystems. Invasive *Eurasian milfoil* has forced Houghton Lake interests to spend millions of dollars for control since 2002. We hope to avoid such a future for Lake Leelanau.

In an effort to establish an early warning system against potential invaders, seven members of LLLA (Robert Bosch, Bruce Harlton, Larry Hauser, John Popa, Monica Schroder, Kathy Turner, and Wayne Swallow) participated in an invasive plant species workshop sponsored by Leelanau Clean Water led by Dr. Jo Latimore of Michigan State University. It covered the problems caused by invasive plants, how to identify aquatic plants, and resources for help with eradication when an invasive plant is discovered in a lake. The LLLA group will initiate sampling for invasive plants this summer. We would welcome other volunteers to join us. Your time commitment would be one or two (hour-long) meetings and spending a few hours during a couple of days on our beautiful lake. We encourage other LLLA members to join us with this effort. Anglers are especially encouraged because of the knowledge they have of lake weed beds. To respond, email [wayneswallow@att.net](mailto:wayneswallow@att.net). Thanks in advance for your help!

## Preventing & Relieving Swimmers Itch

adapted from the Lake Leelanau Landowner's Handbook  
<http://www.lakeleelanau.org/handbook/introduction.pdf>

- Towel off vigorously immediately after swimming and change into clean dry clothes. Better yet, shower and towel off.
- Avoid swimming at midday when the cercaria are most active and in areas exposed to prolonged onshore winds (the larvae drift near the surface and accumulate in a wind).
- Swim in deeper water where the snails are unlikely to occur.
- Apply an oily substance such as baby oil or a waterproof sunscreen before entering the water. Waterproof insect repellent may offer still more protection. John Fitzpatrick swears by Bullfrog Bug & Sun.
- Avoid feeding waterfowl and attracting them into your swimming area. Their presence may contribute to the problem.
- In case of exposure, application of topical antihistamines, such as Benadryl, or topical hydrocortisone creams, help reduce inflammation and relieve itching.

## Narrows Overlay Survey Results

SURVEY QUESTION: To “protect the Lake Leelanau Narrows as a sensitive environment” the Leland Township Planning Commission has proposed a Narrows Overlay District as part of township rezoning. This Overlay District would [1] impose residential waterfront-setback requirements of 40 feet for commercial properties (otherwise subject to only a 25' setback) in the District; [2] require a 25' waterfront greenbelt buffer (allowing for a 3' access path) on all properties in the District; [3] limit the impermeable surface coverage within the District to 55% of total surface area; [4] ban marinas altogether for properties in the District. *Do you favor enactment of this proposal?*

Survey Cards Distributed: 360

Survey Cards Returned: 108

Adults Represented: 248\*

Leland Township Taxpayers: 162

Leland Township Voters: 58

Approve of Narrows Overlay District Plan

Yes: 234 (94%)

No: 4 (2%)

Undecided: 10 (4%)

### COMMENTS & EXPLANATIONS

- Failure of the Provemont Village plan is the best thing to happen for Lake Leelanau in recent history. I am hopeful the new owners will respect the property that is so important to so many.
- Not just select C2: not fair! If one, then all. Be consistent and make them all C2 Overlay. All of them. You have appeased the big mouths.
- Good move! | Thank you! | Excellent idea!
- I don't like the carve-out for Cypher's property.
- All of us who live on the lake are affected by the Narrows.
- Protecting the Narrows must be a priority. 15 slip marina “grandfathered in” is a fair concession.
- Long overdue.
- Thank you for all the work you do on our behalf.
- Finally! A plan to protect a precious resource.
- Kudos to the LLLA for its persistence and to John Fitzpatrick for the reasoned tone of his forum article.
- It is long overdue protection & a reasonable balance of interests.
- Agree & strongly approve of goals for the LLLA over the next 5-10 years.
- Would prefer to have lots just south of John Bunek included in the Overlay District.
- It is obvious that we cannot count on State powers that be for protection of this sensitive area. We must keep local control!
- Undecided: favoring yes but more restrictive.

\*The survey card asked “How many adults in your household agree in these responses?” We anticipated responses of 1 or 2 depending on whether the member surveyed had a spouse/partner. Unexpectedly, several responses put the number of adults represented as more than 2 (10 on one card, and 8 on another), perhaps reflecting collective ownership arrangements or, at least, shared familial sentiments.

## Itch Control Update

In the wake of Swimmers Itch Control Inc. (SI-Con)'s exit from the field, itch control efforts begun last year are on hold; at least for this summer. We have been unable to get the depredation permits required to continue the merganser trapping & relocation program begun last summer. Glen Lake, with whom we had planned to partner, faces the same obstacles to carrying on with its own long-running program. Long term prospects for this trap-and-relocate program depend on the willingness of both federal and state permitting authorities to issue the needed permits. The LLLA, in cooperation with several other Lake Associations, are still pursuing options that would allow continuation of the removal & relocation plan that has proven successful on Glen Lake. We are also exploring alternatives. Stay tuned!

## Lake Leelanau gets New Buoys

Jim Kacin

The LLLA recently purchased 10 new channel markers for the area near Fountain Point, the Narrows, and the mouth of the Leland River. Our thanks go out to Andy at Stander Marine for installing these buoys.



### What is a marina?

[http://www.michigan.gov/deq/0,1607,7-135-3313\\_3681\\_3711-17921--,00.html](http://www.michigan.gov/deq/0,1607,7-135-3313_3681_3711-17921--,00.html)

## 17 Best Practices for our Lake

1. Use a 4-stroke outboard engine not a 2-stroke for boating recreation.
2. Understand and care for your septic (or other) waste treatment system.
3. Maintain a shoreline buffer strip of vegetation, preferably native.
4. If you fertilize, use a zero phosphate, and do not fertilize twenty feet from the shoreline. (Phosphate is the middle number on the bag.)
5. Do not put leaves, household chemicals, or other foreign materials into the lake.
6. Landscape property so that stormwater soaks into the soil and does not run directly into the lake.
7. Use lake water (a natural nutrient source) to water lawns and gardens.
8. Preserve wetland areas of your property and maximize native vegetation to protect water quality, wildlife habitat, and the aesthetics of the lake.
9. Speak out to local governments when their actions (or inactions) may affect the lake.
10. Subscribe to the *Michigan Riparian* to learn of matters affecting Michigan lakes.
11. Contact a Land Protection Specialist at Leelanau Conservancy to discuss your conservation options.
12. Set up a compost system for organic waste.
13. Establish shoreline stabilization with the use of rip-rap (or other acceptable methods) to control erosion.
14. Respect speed limits, no wake zones, and other water safety regulations.
15. Take precautions to eliminate hitchhiker species (such as zebra mussels) when moving my boat from one lake to another.
16. Support your lake association by membership and volunteer assistance.
17. Support the Leelanau Conservancy which is our partner in protecting the Lake Leelanau Watershed.

### More Dates to Remember

#### Household Hazardous Waste & Electronics Collections

Leelanau County Planning & Community Development  
Department

July 24<sup>th</sup> (Suttons Bay)

September 18<sup>th</sup> (Peshawbestown)

Call 231-256-9812 to make an appointment.

#### Leelanau Conservancy Annual Picnic & Auction

Thursday August 5, 2010

For further details, to be a sponsor, or donate an item, call

Carolyn Faught at 256-9665 or email

[cfaught@theconservancy.com](mailto:cfaught@theconservancy.com)

## Be Safe - Follow the Rules!

Jim and Cindy Kacin



Jet skis, personal watercraft, wave runners or whatever you want to call them are great fun. Here are some tips that we use at our cottage that can keep your family and friends safe while riding your machines and save you from needless worry and costly repair bills. We have a list of jet ski rules that we post on our refrigerator. Anyone who uses our machine must read them before going out.

- Take a cell phone with the house number programmed into it and put it in the dry storage container on the machine with the registration. Tell someone which direction you are going and approximately how long you will be.
- Do not run over ropes or other floating objects as they can be sucked up into the engine and cause expensive repairs. Unlike outboard motors, jet skis suck in water even while in neutral.
- Don't accelerate until you are at least 50 feet from the dock and are in deep enough water so you don't suck up stones and seaweed into the engine.
- Practice driving the machine in and out of the hoist before you go out.
- Be sure the key lanyard is clipped to your life vest. If you feel like you are going to fall off the machine, just go with it. Trying to keep yourself from falling or being thrown off can cause more injury than not. Besides, that's part of the fun!
- Absolutely do not play chicken with another machine.
- If you fall off, get back on the machine from the rear. If the machine is flipped upside down, look for the directions on the back of the machine for the proper way to flip it back over. The direction of the flip makes a difference!
- PWC's cannot be operated on the lake before 8 am or after one hour before sunset.
- Stay at least 100 feet from docks, shorelines, other boats, fisherman, skiers, etc.

Post these on your refrigerator and make your riders read them every season for a safe and enjoyable summer experience!

## Spring Wildlife Extravaganza

Sera Thompson

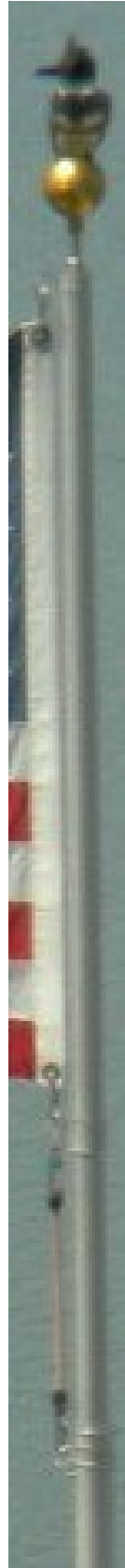
The late spring morning view of a calm Lake Leelanau was obscured by a fog bank creeping south. The glow of the morning sun became diffused by the dense cloud as it moved in front of cottages lining the western shoreline. The glare of the rising sun bouncing off their windows was now gone, the morning welcome faded. But from the depths of the ghostly fog came a familiar call. The loons were back. The morning brightened once again with the knowledge of their return. They were the first that day to join us in welcoming spring.

The next visitors, Mr. and Mrs. Mallard, waddled up the slope of our lakeside lawn, obviously on a mission. They had bonded during the excitement of spring courtship and were now headed for our backyard. We have avoided feeding waterfowl, and were mystified by their move deep into our property from their watery path. Their destination became clear when the "missus" began munching down on the leftovers scattered from the birdfeeder, now absent. The gallant mister kept a close eye on his partner, staying close and watching her back as she searched for the best of the goodies. Satisfied, she led him back to the shoreline, wobbling down the slope into the water.

A coffee break brought us back to the windows for a midmorning check on lake activity. We weren't disappointed. Zipping along the shoreline with his incessant chittering was a kingfisher. Much to our surprise, he chose a resting place atop our flagpole, his sharp crested profile making a dignified flag topper. He obliged us by gracing his spot long enough for us to take a fuzzy picture.

At noon the unseasonably warm day and our curiosity drew us out onto the dock recently installed. It was still considered a treat to scope out the waterfront minus a sweater or jacket and we knew, at this point on the calendar, that these bone-warming temperatures would be rare for a while. It was our lunch break, and we were curious to see what would be next to appear.

Not all of the visitors that day held equal esteem, but were part of the wildlife hierarchy nevertheless. As we walked toward the end of the dock, the flurry of underwater activity drew our attention back toward the shore. The suckers were large, larger than most fish appearing near the lakefront. Their spawning journey eventually took them along the shoreline as they left behind the next generation.



Our day was winding down as we finished our supper and I left for evening French class. My absence prompted an opening for my husband to answer the pull of the lapping water. Slipping his kayak into the water, he paddled south along the shoreline, enjoying the peace of this gentle place. He appreciated the grand picture of the lake as well as the delicate details along the way, his goal to silently stroke with a minimal disturbance. Drawn back home by the obligations of the next day, he hefted the kayak and paddle back onto land and was about to head up to his home office. He caught sight of a large brown bird alighting onto a tree down the shoreline a bit. He couldn't resist: The kayak went back into the water, his paddling quiet but intense. He cautiously approached his destination, convinced he was seeing a juvenile eagle. That was all he needed to see before he quietly returned home by the fading light of day.

I pulled into the driveway, having enjoyed my French class, but, as always, glad to be home on the shores of Lake Leelanau. The sunset welcomed me, the panorama of the night sky pulled from a different palette of hues than the previous night. I dutifully stored my files from class, focused on the next task at hand before calling it a day. Night had fallen before I noticed. My husband called to me, beckoning me for one last walk onto the dock before day's end. "You have to hear this", he said. As I approached the end of our dock, I heard something I had seldom heard before. It was not a lone call, but a chorus of that distinctive laughing call, not from one place, but from various places, a symphony of loons. Thus came the end to another day in paradise.

**Leelanau Farmers Markets:** a non-profit organization formed by the Leelanau Agricultural Alliance & MSU Extension to improve the marketing of local farm products, preserve county farmland, and "to provide locally produced farm and food products for the benefit of the Leelanau Community."

- **LELAND:** June 17 to Sept. 2: Thursdays, 9 am to Noon: Parking lot, across from the Bluebird Restaurant
- **GLEN ARBOR:** June 15 to Aug. 31: Tuesdays, 9 am to 1 pm: Downtown, behind the Glen Arbor Township Hall
- **NORTHPORT:** June 18 to Sept. 17: Fridays, 9 am to 1 pm: the Depot, next to the marina
- **SUTTONS BAY:** May 15 to Oct. 16: Saturdays, 9 am to 1 pm: ice skating rink corner at Lincoln & Broadway Streets
- **EMPIRE:** June 12 to Sept. 25: Saturdays, 9 am to 1 pm: Downtown, next to the Post Office
- **LAKE LEELANAU:** June 13 to Sept. 5: Sundays: 10 am to 2 pm: Parking lot, next to Kejara's Bridge Restaurant

[http://landofdelight.com/page\\_10650.html](http://landofdelight.com/page_10650.html) <http://www.youtube.com/watch?v=vRR74i5ABtY>

## Watershed Plan Completed

by Wayne Swallow

The Lake Leelanau Watershed Protection Plan was completed by the steering committee and submitted to the MDNRE for approval. This plan will be our 10-year project roadmap to maintain the high water quality we enjoy in Lake Leelanau. The plan establishes six overall goals which were developed by the steering committee based on input from the LLLA Board and several public comment sessions. The goals include the following:

1. Protect aquatic and terrestrial ecosystems.
2. Protect and improve the quality of water resources.
3. Establish and promote management practices that conserve and protect the natural resources of the watershed.
4. Preserve the quality of recreational opportunities.
5. Establish and promote educational programs that support stewardship and watershed planning goals, activities, and programs.
6. Preserve the distinctive character and aesthetic qualities of the watershed, including viewsheds and scenic hillsides.

These goals along with a 10-year project list and estimated budget(s) will be used by project partners to obtain grant funds to maintain and improve water quality in Lake Leelanau. Partner organizations which will help implement the plan include: The Watershed Center of Grand Traverse Bay, Grand Traverse Band of Ottawa and Chippewa Indians, Lake Leelanau Lake Association and Friends of the Lake, Michigan Department of Environmental Quality, Michigan Department of Natural Resources, Conservation Resource Alliance, Leelanau Conservancy, Leelanau Conservation District, Natural Resources Conservation Service, NW Michigan Council of Governments (NWCOG), Leelanau Scenic Heritage Route, Leelanau County, and the following Leelanau County townships: Bingham, Centerville, Cleveland, Elmwood, Kasson, Leelanau, Leland, Solon, and Sutton's Bay.

The steering committee which facilitated the development of the plan included three members from LLLA (Hugh Farber, Mary Taylor, and Wayne Swallow); Steve Christensen: Leelanau County Drain Commissioner; Matt Heiman: Leelanau Conservancy; Sarah U'Ren: The Watershed Center Grand Traverse Bay; Brett Fessel & Desmond Berry: Grand Traverse Band of Ottawa and Chippewa Indians; Patty O'Donnell: Leelanau Scenic Heritage Route & Northwestern Michigan Council of Governments.

## Walleye Festival Returns to Lake Leelanau

by Pete Taylor



After a five year absence, the Lake Leelanau Walleye Festival is back. Sponsored by the Lake Leelanau Community Association, & supported by sixty community businesses and associations including the LLLA, the event was held on Friday and Saturday May 21 and 22. Forty two-contestant teams fished from 7a.m.–1p.m. on Saturday and competed for over \$1,700 in prizes. Many fish were caught – most of them from the south lake, but the largest were caught in the north lake. The largest walleye weighed in at 6.5 lb. and was caught by Matt Gleason out of Rodney Price's boat. Several other nice walleyes weighing 3lbs. and more were boated in the north lake. In addition a 5 lb. brown trout, a 10 lb. lake trout, and a 8 lb. northern were caught and competed in the non-walleye category. Tony West who was chairman of the event said it was a huge success and he is looking forward to a repeat next year.

## Sixth Annual Kids' Fishing Day Ahoy!

by Pete Taylor

The 2010 Kids' Fishing Day will be held on Sunday June 27 at Veronica Valley from 11a.m. to 3p.m. More than 600 people attended last year and we expect even more this year. Over 1,500 bluegills have been stocked and are waiting for the kids to catch them. The kids can also see interesting nature displays, participate in "fish painting," and talk to and learn from a variety of fishing experts. Also provided are hotdogs and pop to satisfy the inner fisherkid. The entire event is free and includes bait and tackle for those who don't bring any. So grab your kids and grandkids and come out and join us for a day of family fun.

If you would like to volunteer to help at the event, call Pete Taylor at 231-590-3309.

**Sponsors & Supporters:** Lake Leelanau Lake Association, Leelanau Enterprise, Michigan DNRE, Cedar Rod and Gun Club, Cherryland Electric Co-op, Leelanau County Parks and Recreation, Camelot Construction, PATH, Jim Seeley, Hanson's Grocery, Meijers, Monstrey's Tents, Suttons Bay EMS, Jon's Barber Shop, Deering Tree Service, Lake Leelanau Community Association, TC Children's Museum, Fountain Point Resort.



P.O. Box 123  
Leland, MI 49654-0123

Non-Profit Org.  
U.S. Postage Paid  
Lake Leelanau, MI  
Permit # 11

***ADDRESS SERVICE REQUESTED***



**Find the Fish in the Photos Contest**

Photos courtesy of Wayne Swallow

[www.lakeleelanau.org](http://www.lakeleelanau.org)